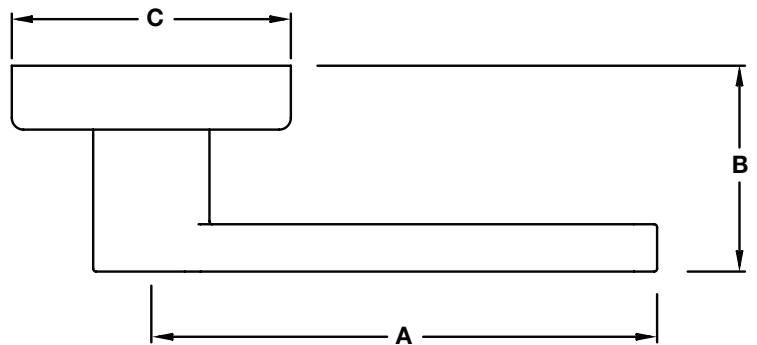


RESIDENTIAL LEVER SPECIFICATIONS

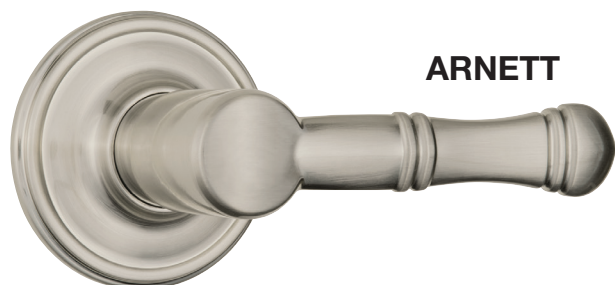

HARPER

Levers Meets ADA Requirements

ALWOOD

GLENSHAW

Styles	A (in)	B (in)	C (in)
Harper	4.11	2.40	2.95
Alwood	4.13	2.72	2.95
Glenshaw	4.11	2.45	2.95
Arnett	4.25	2.51	2.95

Dimensions are for outside lever, passage function, 1-3/8" inch thick door.


ARNETT

Finishes	105 Polished Brass	119 Satin Nickel	125 Polished Chrome	150 Tuscan Bronze
Harper		•	•	•
Alwood	•	•	•	•
Glenshaw	•	•		•
Arnett		•		•

Lever Specifications & Options

ANSI Grade:	Meets Grade 2 Standards*
Cylinder:	KW1, SC1 available, 5 pin
Keying:	KA3 or as specified. Master key, construction key available
Latch:	2-3/8" or 2-3/4", 1/2" throw
Strike:	2-1/4" Full rim for entry, 2-1/4" full lip for interior, T and ASA available
Door Preparation:	Cross bore 2-1/8", edge bore 1", 1" x 2-1/4" latch mortise, backset 2-3/8" or 2-3/4"
Door Thickness:	1-3/8" to 1-3/4"
Handing:	Levers are reversible except the Glenshaw entry levers and Glenshaw dummy levers
UL Listed:	90 Minute fire-rated available
Chassis:	Cylindrical
Faceplate:	2-1/4" Round corner, drive-in available
Warranty:	Lifetime mechanical, 10 year finish
Functions & Operation	
Passage (F75)	Both levers always free.
Privacy (F76A)	Outside lever locked by off-set push button inside. Outside lever unlocked by emergency key or by pushing, pulling or rotating inside lever, or by closing the door. Inside lever is always free.
Entry (F82B)	Outside lever is locked by push button inside. Outside lever is unlocked by key, or by pushing, pulling or rotating the inside lever. Inside lever is always free. Outside lever cannot be locked with key.
Dummy	For doors where only a pull is required. Does not operate a latch.

*Except the Warped Door Test



BRINKS
HOME SECURITY™

Brink's trademark & copyright works are used with permission.

Hampton Products International Corp.
50 Icon, Foothill Ranch, CA 92610-3000 USA
email: info@hamptonproducts.com
www.brinksprr.com • 1-800-562-5625

©2015 Hampton Products International Corp. 50000-00188_REVA 11/15